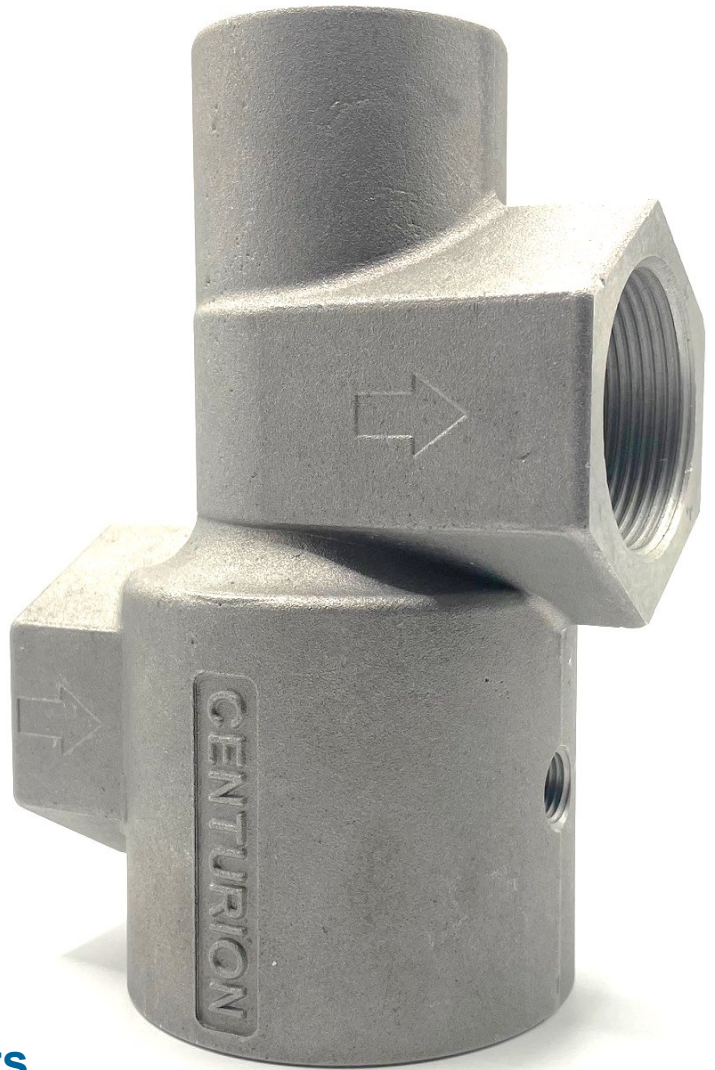




NEW Pneumatic Relay Valve

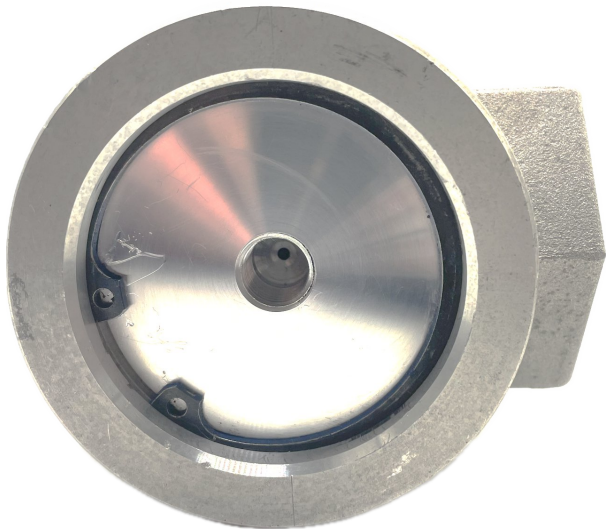
for Pneumatically
controlled Start Systems



Centurion Power Products

Marble Falls, TX 78654

Relay Valve Data



Material: Aluminum (Body, Spool and End Cap) Viton O-Rings for resistance to drying agent Replaceable O-Rings

Pressure Rating: 150 PSIG (10.3 Bar)

Capacity: High Flow for largest air starters on the market today.

Supply: Designed for Compressed Air with provision of a threaded natural gas port. (See materials for determination of the specific application.)

Simple Design: Fewest number of components and configurations for maximum reliability.

Port Sizes:

Main Inlet and Outlet: 1-1/2" NPT

Control Port: 1/4" NPT APP (Applied Pressure Port) and Natural Gas Vent Port (in end cap).

Operating Temperature Range:

-20° to 200° F (-29° to 93° C)

Weight: 3.0 lbs. (1.36Kg)

Replaces:

Sealco™ 10900, 11900, 14900, and 110250

Ingersoll-Rand™ SRV150 and IRV125

TDI™ - Unison™ RLVA-25683-001-1

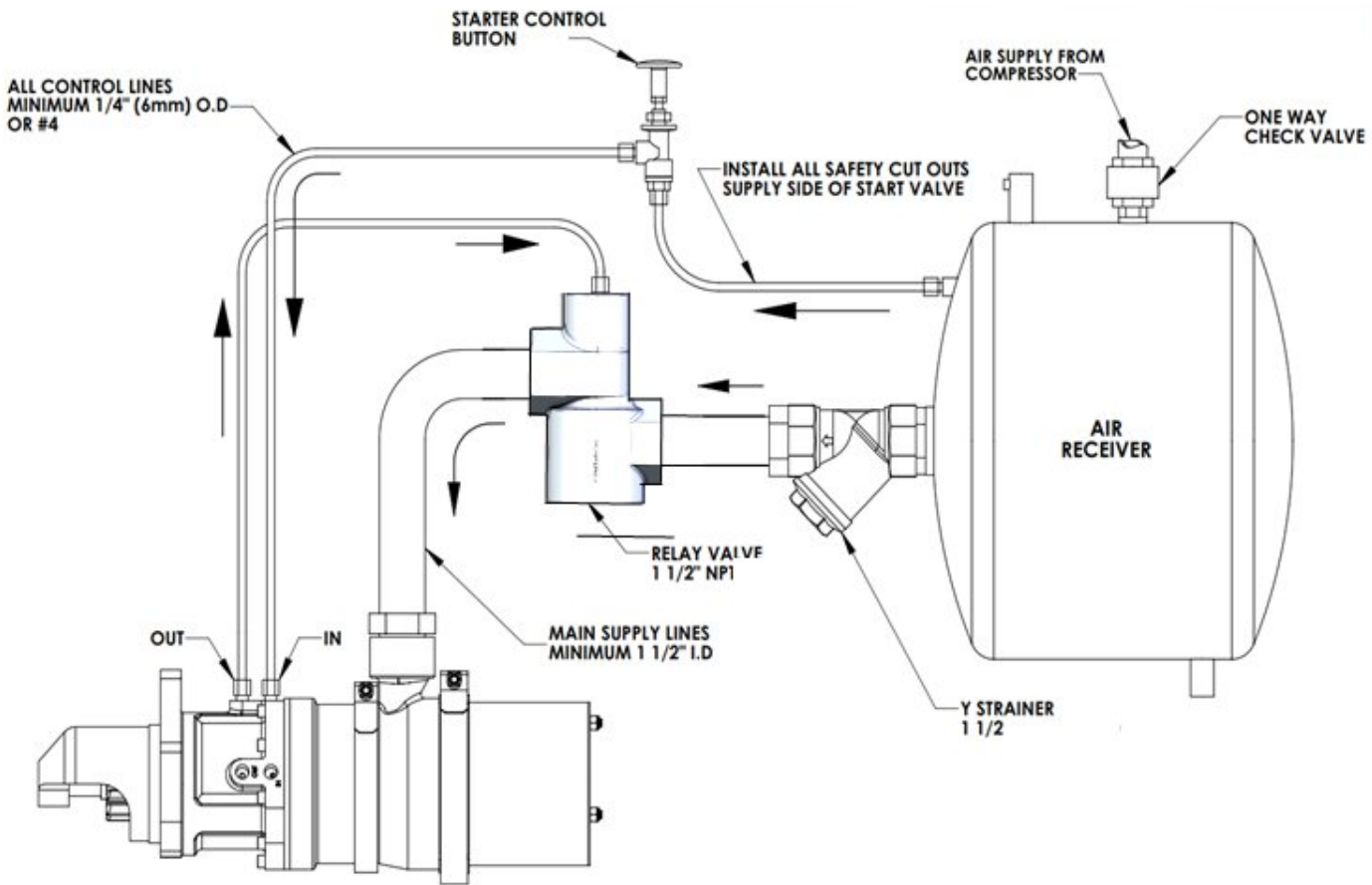
RLVA-25683-001-2

RLVA-25683-001-1-01

RLVA-25683-001-2-01

AUSTART™ RV1500

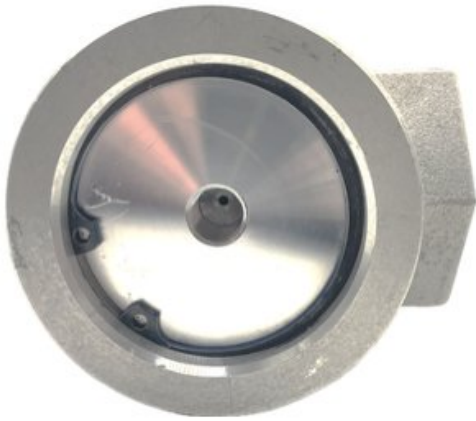
TYPICAL PNEUMATIC STARTER INSTALLATION



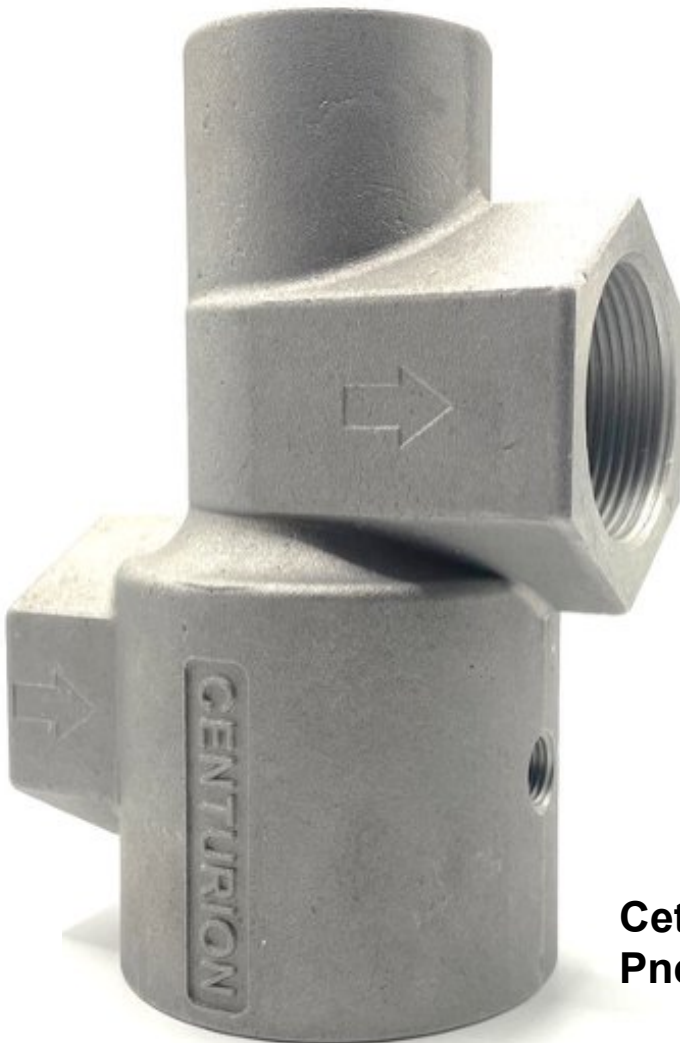
KEY NO.	DESCRIPTION	PART NUMBER
1	Housing, (1-1/2" NPT)	ARV15-40
2	O-Ring, Viton	ARV15-211
3	O-Ring, Viton	ARV15-210
4	Piston	ARV15-246
5	Dampener, Shock	ARV15-339
6	Cap, O-Ring	ARV15-33
7	Spring, Compression	ARV15-250
8	O-Ring, Viton	ARV15-212
9	End Cap	ARV15-338
10	O-Ring, Viton (Qty 2)	ARV15-213
11	Ring, Retaining	ARV15-340



See Illustrated Parts Breakdown on next page.



The end cap comes standard with a tapped 1/4" NPT port so user can install a protected cap vent to prevent dirt from entering the valve in dirty environments such as in mining or marine applications.



**Ceturion ARV-15
Pneumatic Relay Valve**

Illustrated Parts Breakdown

